

**בית המדרש לטכנולוגיה עתידית
שבמרכז האקדמי לב**

Research Institute for Halacha & Future Technologies

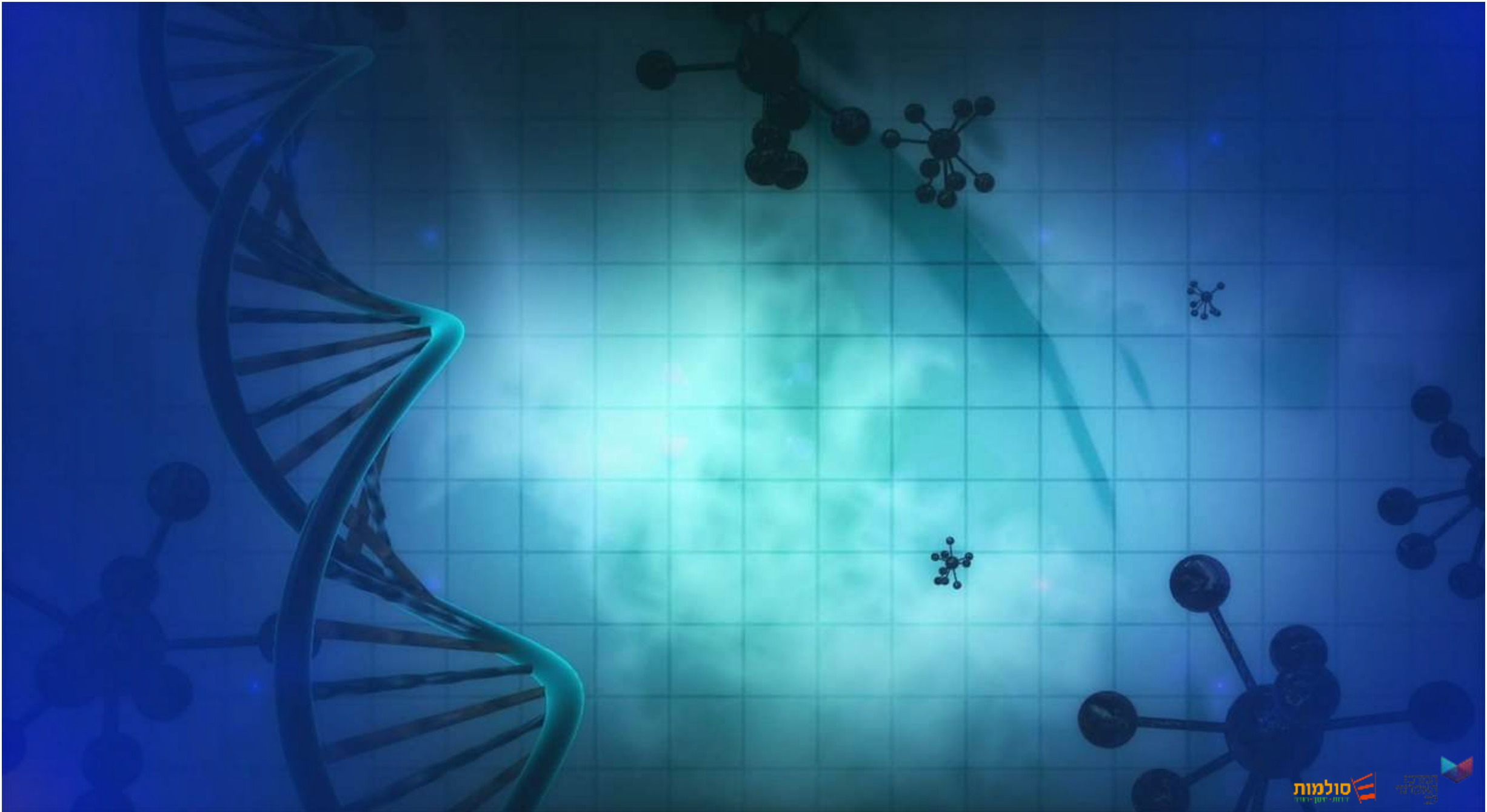


המרכז
האקדמי
לב
















הר סיני

Mt. Sinai





ציפורי Zippori



טבריה Tiberias



צפת

Zfat



המרכז האקדמי לב JCT

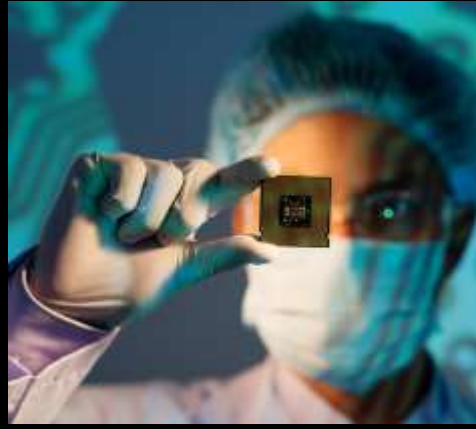


בית מדרש

Bet Medrash

בית מדרש לשאלות העתיד

Bet Medrash of the Future



A platform
for
investigating
the Halacha
of the future



Bet Medrash of the Future



Bet Medrash of the Future



Partnership
Collaborations
among rabbis,
scientists and
innovative companies

Bet Medrash of the Future

Partnership
Collaborations
among rabbis,
scientists and
innovative companies

The Future

Halachic considerations
in innovative technologies

Bet Medrash of the Future



Partnership
Collaborations
among rabbis,
scientists and
innovative companies

Public Access
Transmitting halachic research
to the public

The Future
Halachic considerations
in innovative technologies

Bet Medrash of the Future

Trailblazing
Guiding the decision making of rabbis and public policy makers

Partnership
Collaborations among rabbis, scientists and innovative companies

Public Access
Transmitting halachic research to the public

The Future
Halachic considerations in innovative technologies

בית המדרש
המרכז
האקדמי
לב



הוא המקום למימוש החזון

Torah

Technology • Innovation

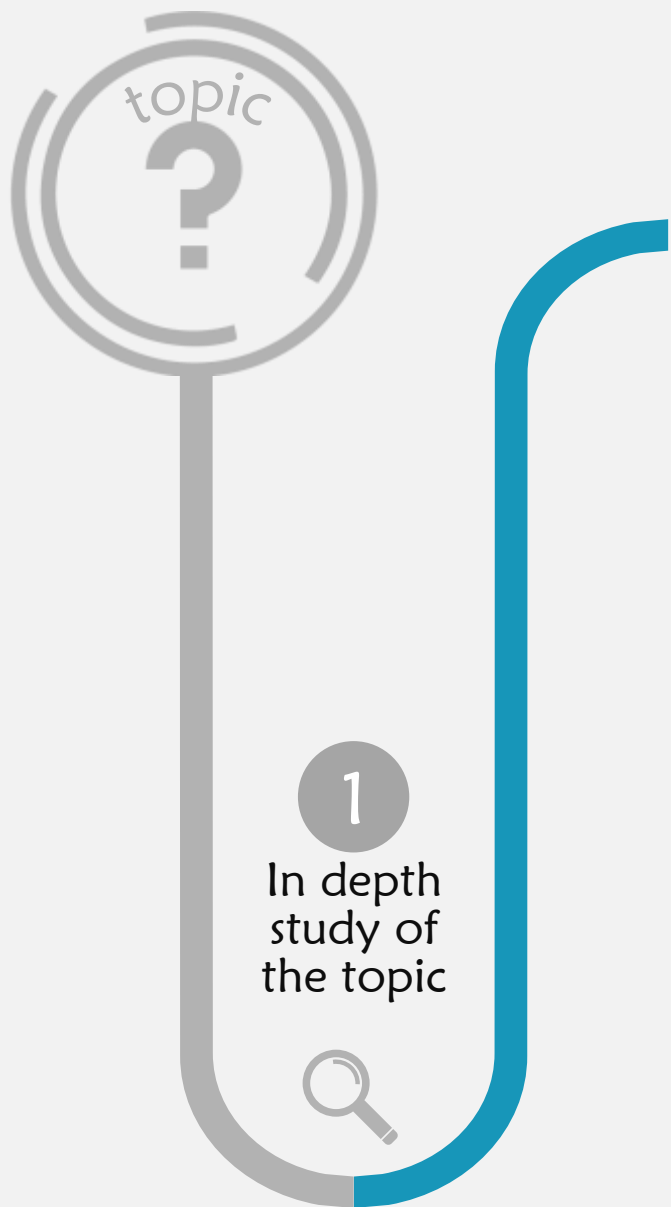
בית המדרש
המרכז
האקדמי
לב

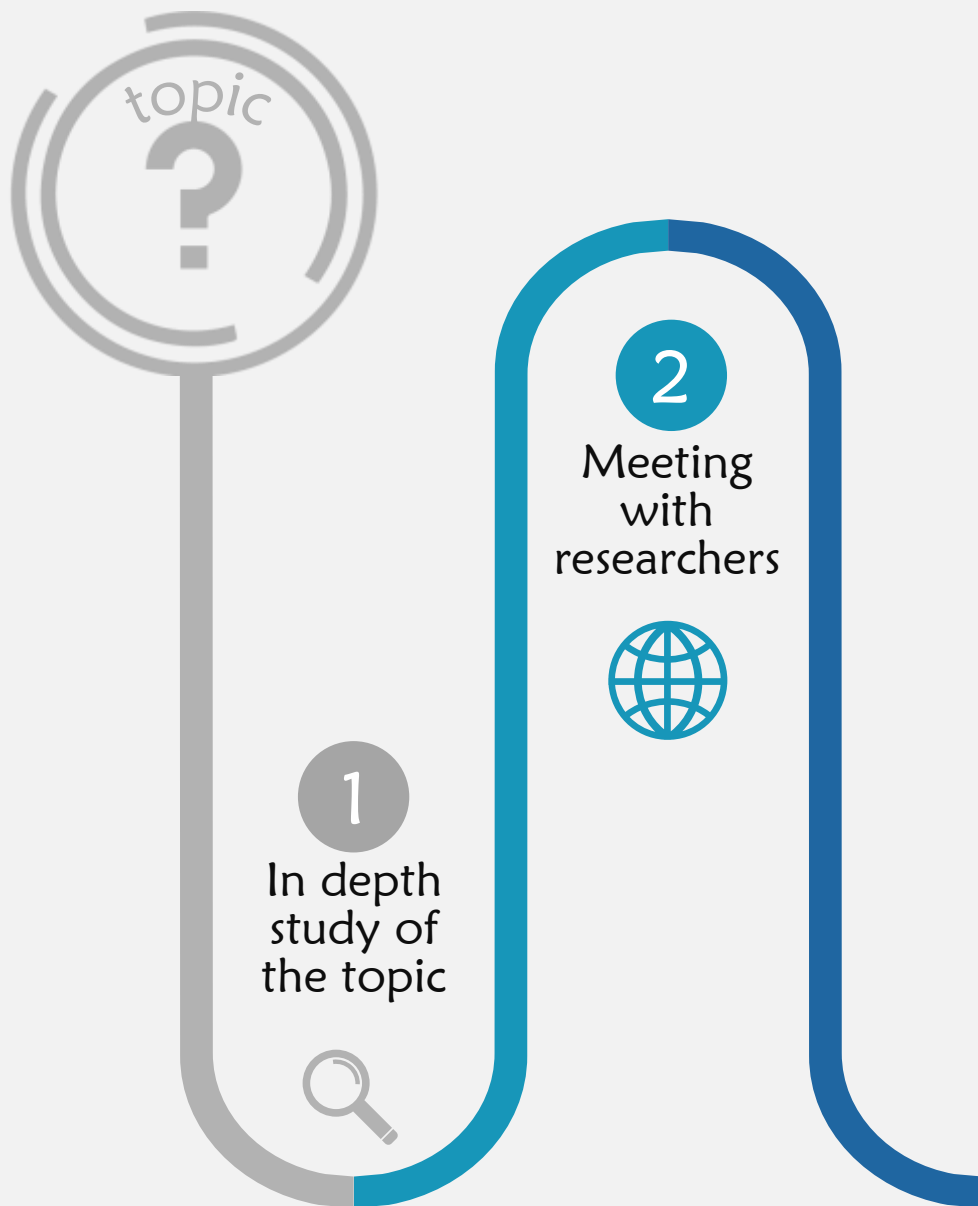


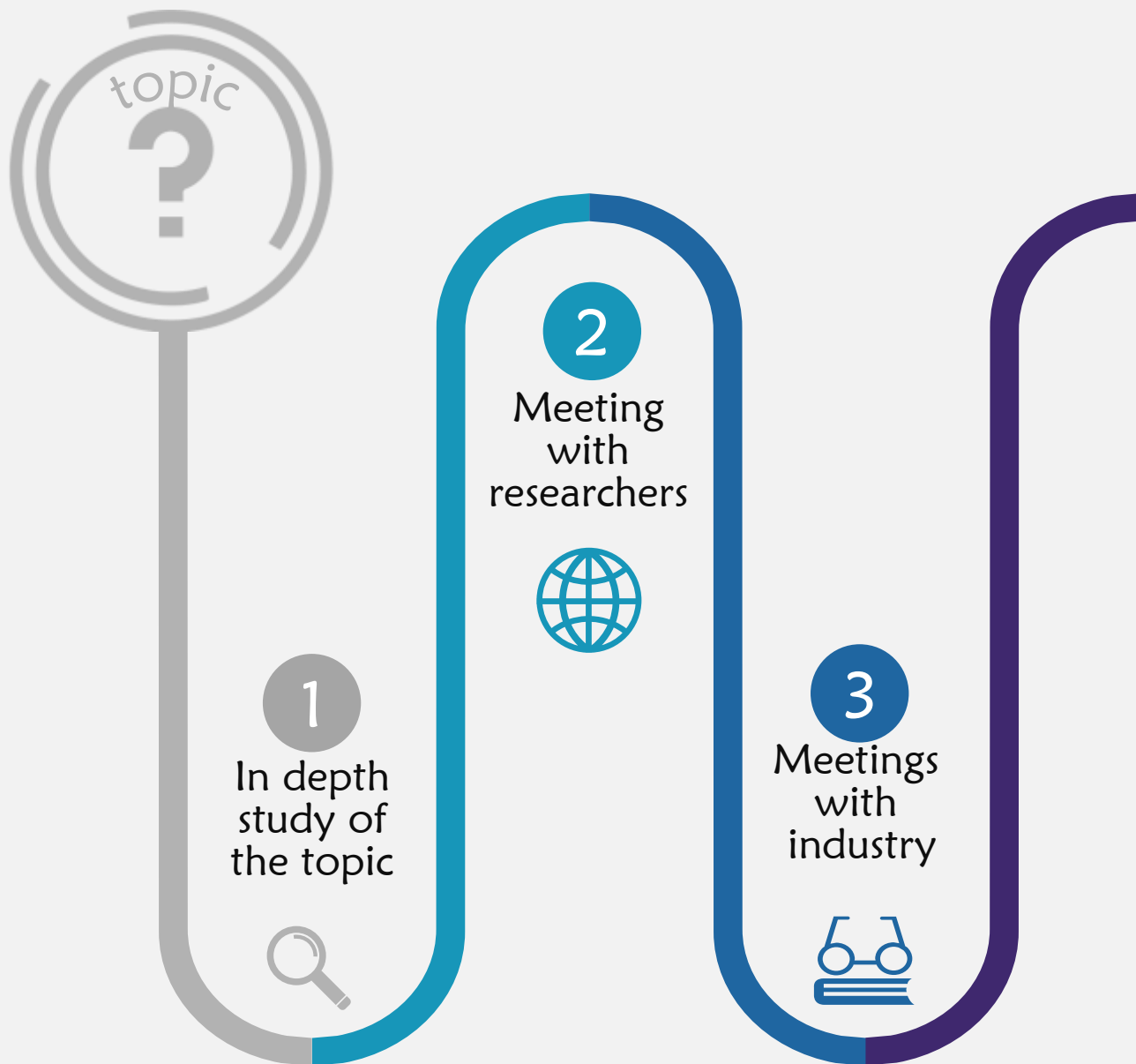
הוא המקום למימוש החזון

How will it work?











1

In depth study of the topic



2

Meeting with researchers



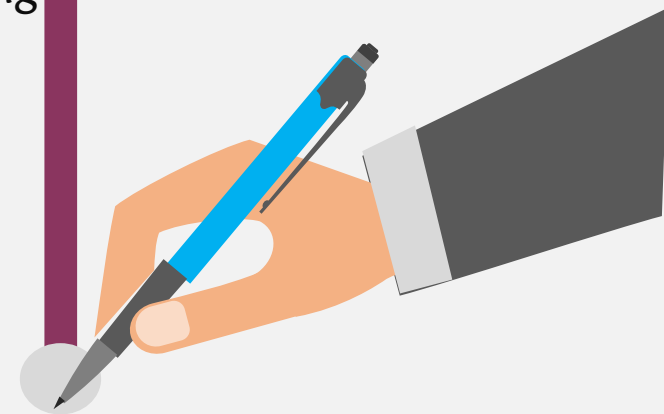
3

Meetings with industry



4

Writing halachic position papers and disseminating results



Additional Products of the Bet Medrash



WIKI-LEV
On-line
encyclopedia of
Halacha and
technology



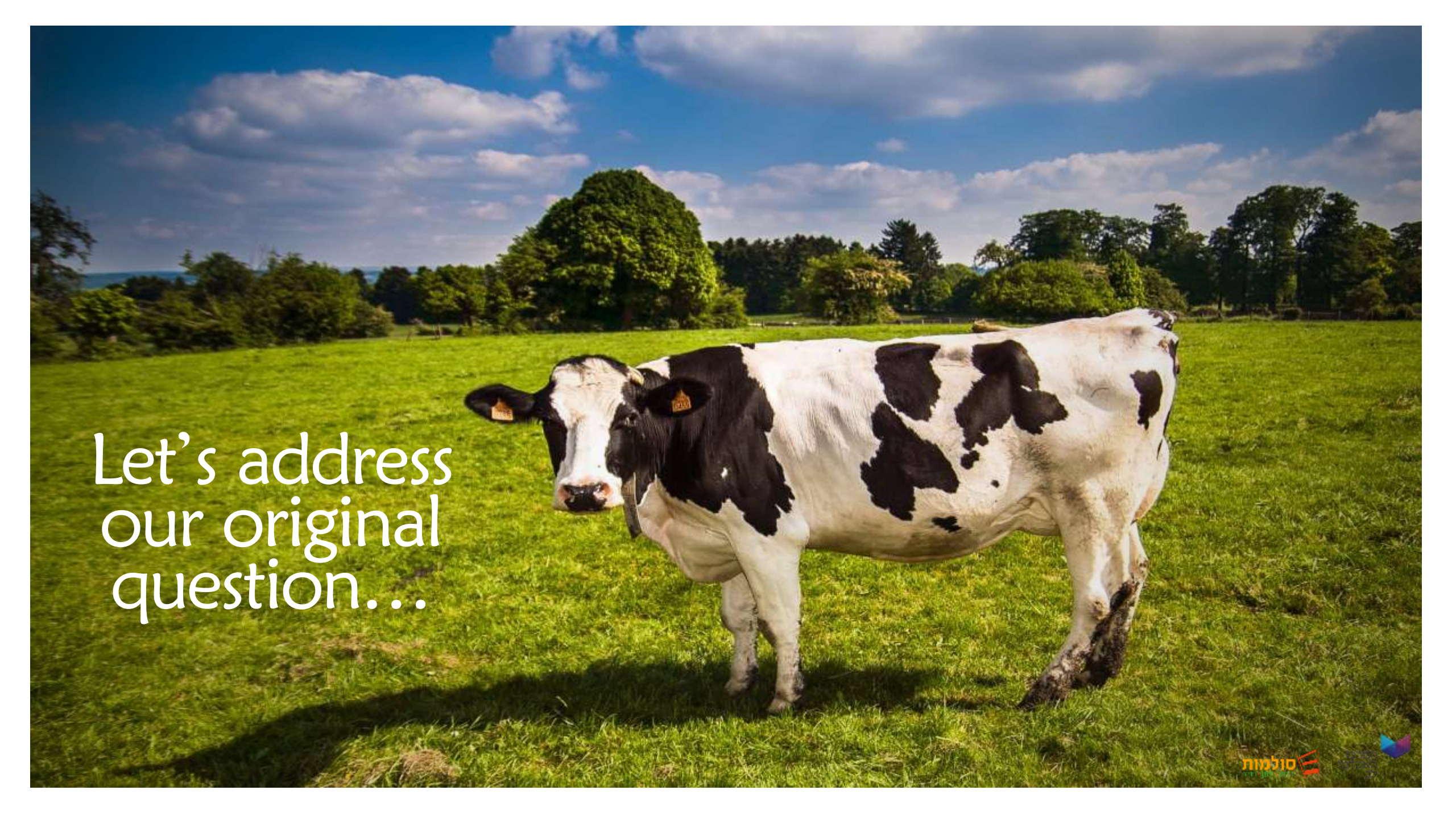
Videos and
Podcasts for easy
public access



Annual
Academic
Conferences



Workshops for
Rabbinic
Leadership

A black and white cow stands in a lush green field. The cow has large black patches on its white body and is looking towards the camera. The background features a line of trees and a bright blue sky with scattered white clouds. The scene is brightly lit, suggesting a sunny day.

Let's address
our original
question...

What is the Halachic perspective
on lab grown meat?
Is it meat or a meat substitute?



What is the halachic status of lab-grown meat?



Lab-grown meat is not the same as natural meat



The lab process resembles the natural process



Can pig stem cells be used to make kosher pork?

- 1) Ethical Challenges
- 2) Slippery slope
- 3) Kashrus in the 22nd century



Cultured meat is a new entity and would be pareve, though we may need to treat it like meat



Cultured meat is meat and the kashrut of the stem cells matters

- 1) Status of stem cells
- 2) Source of stem cells
- 3) Culture medium

Position Paper

The Kashrut and Halachic Status of
Stem Cell Derived (lab grown)
“Meat”

2020



